



## SNEEZEGUARDS

TEL: 800-690-0002

FAX: 925-680-7252

### ES-31 - Self-Serve

Project Name: \_\_\_\_\_

Item Number: \_\_\_\_\_

Quantity: \_\_\_\_\_

Length: \_\_\_\_\_

### Specifications:

#### Construction:

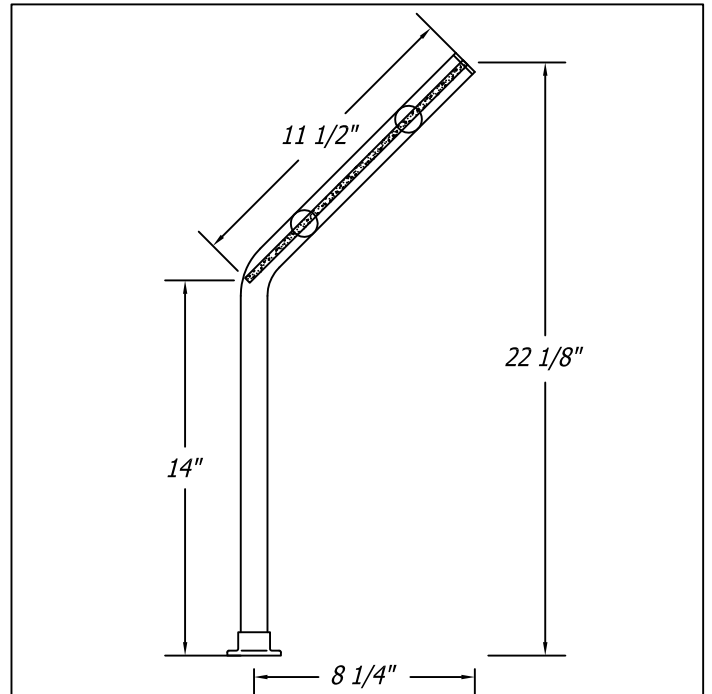
- 1" Round Tubing
- 2" Heavy Duty Flanges
- Glass Brackets accept 1/4" or 3/8"

#### Available Finishes:

- #4 Brushed Stainless Steel
- #4 Brushed Aluminum
- Powder Coated Black

#### Glass:

- 1/4" or 3/8" Clear Tempered Glass with Polished Edges
  - 3/4" Radiused Corners Available
  - Maximum Spacing Between Posts:
    - 42" Center to Center with 1/4" Glass\*
    - 54" Center to Center with 3/8" Glass\*
- \*Tempered Glass Required



### Options:

#### End Panels:

- ☐ Left Closed End Panel
- ☐ Right Closed End Panel

#### Finish:

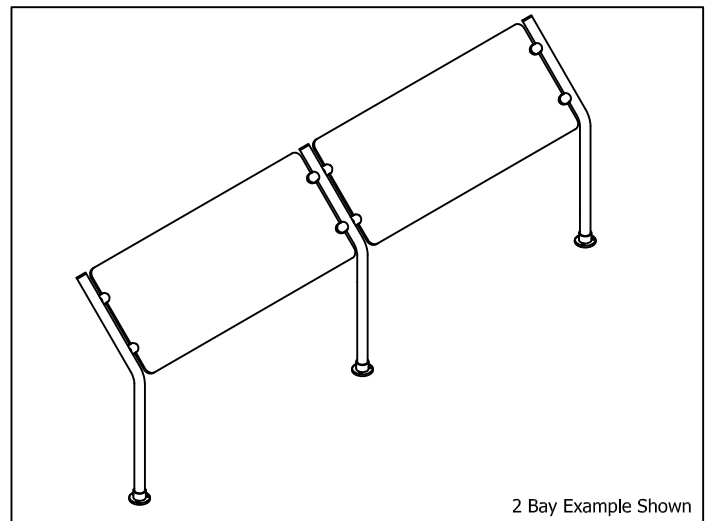
- ☐ #4 Brushed Stainless Steel
- ☐ #4 Brushed Aluminum
- ☐ Powder Coated Black

#### Glass Options:

- ☐ 3/4" Radiused Corners
- ☐ Standard Square Corners

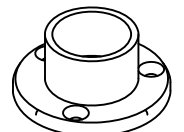
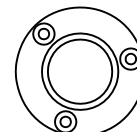
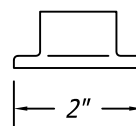
#### Glass Thickness:

- ☐ 1/4" Glass (Maximum span 42")
- ☐ 3/8" Glass (Maximum span 54")



2 Bay Example Shown

#### Standard Flange



Flanges use #8 screws (Not Included)

